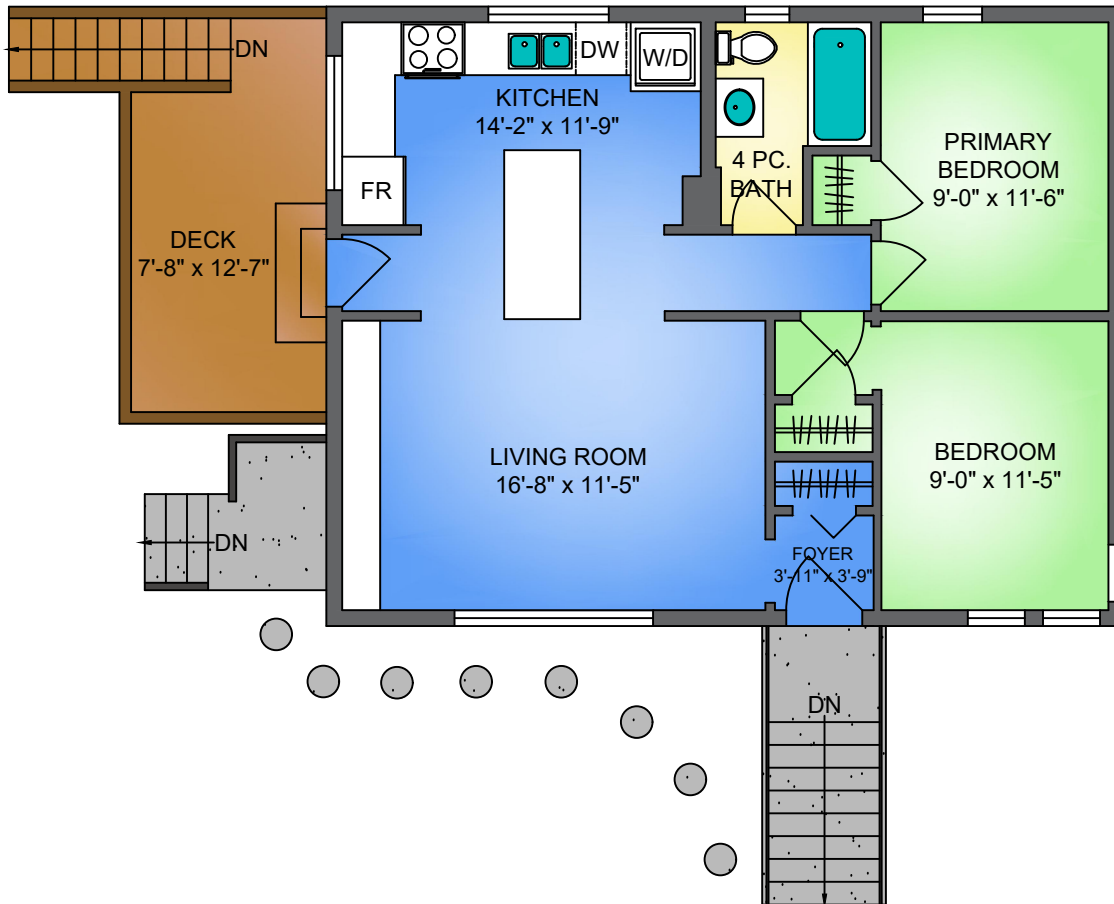


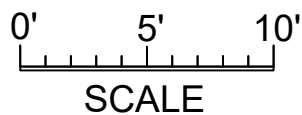
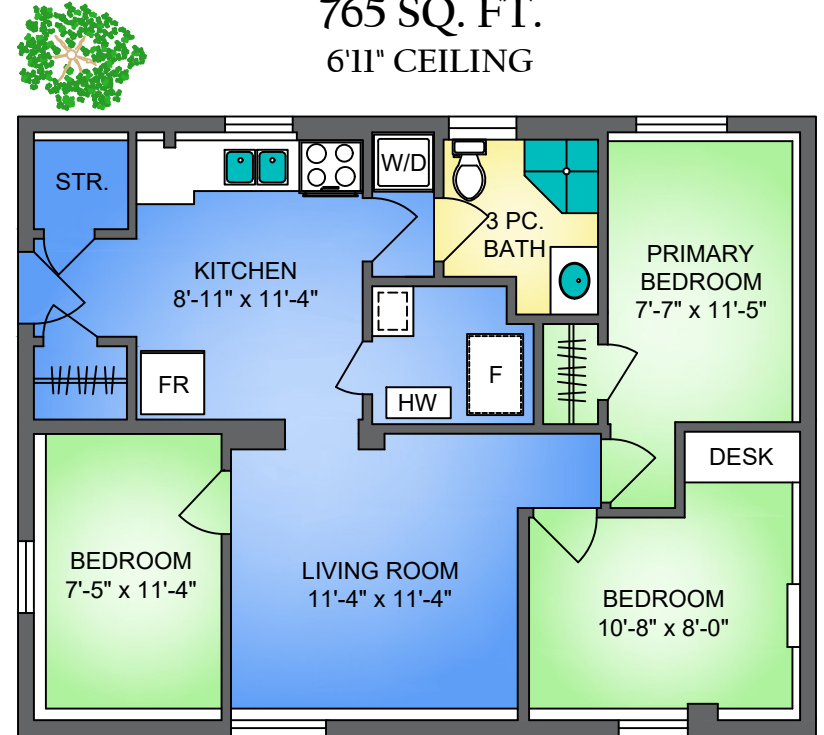
MAIN FLOOR

765 SQ. FT.
7'11" CEILING

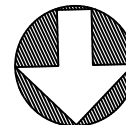


LOWER FLOOR

765 SQ. FT.
6'11" CEILING



NORTH



320 HOLMES STREET, NEW WESTMINSTER

NOVEMBER 25, 2022

PREPARED BY PROPER MEASURE.

FOR THE EXCLUSIVE USE OF MIKE DICKIE.

PLANS MAY NOT BE 100% ACCURATE, IF CRITICAL BUYER TO VERIFY DIMENSIONS AND MEASUREMENTS ARE APPROXIMATE.

FLOOR	AREA (SQ. FT.)	
	FINISHED	DECK / PATIO
MAIN	765	108
LOWER	765	-
TOTAL	1530	108